



LODGE, SAFARIS & MOUNTAIN CLIMBING

www.honeybadgerlodge.com

Part of Milestone Lodges and Safaris, P.O. BOX 1258 MOSHI, TANZANIA.

Tel: +255787730235 or +2557675551190

Email: info@honeybadgerlodge.com

TIN. 109-385-662 : VRN. 40-006059-E



WHO WE ARE
WHAT WE DO

J & J Renju

Milestone Lodges and Safaris

1/1/2015

Some comments from our guests...

"Honey Badger feels like home in Tanzania"

"even though I was told that food and lodging were very good at HBL, I certainly did not think it would be as wonderful as it was. Really impressive and that made our stay so enjoyable indeed".

"its a pleasure to stay somewhere that invests so much in the local community while giving us a great time too! Thank you!"

"my stay at Honey Badger has made my trip perfect. Amazing atmosphere and provides the perfect rest and relaxation. Thank you"

"A wonderful stay, could have stayed a week or two longer, very relaxed and the staff were friendly and helpful. Thank you HB!"

"What really wants to make me return is friendships that I made with the family and staff. And the opportunity To donate time and energy to the numerous community Projects this place supports"

"If you want to experience life with the locals and enjoy the comforts of home...this is what you want ... a hidden patch in paradise"

For more independent reviews please see what others have to say on www.tripadvisor.co.uk

About us...

Our lodge is a family run, solar powered oasis with breathtaking views of Mount Kilimanjaro. We are situated just 6kms out of Moshi town on the Moshi to Dar es Salaam road. Our swimming pool and lush, spacious grounds provide guests with a lovely natural relaxing environment. Our location enables guests to experience rural life and feel more in touch with the country they are visiting. As well as accommodation we through our sister company (Milestone Safaris and Mountaineering) we are a licensed tour operator and organise mountain climbs, safaris as well as local and cultural activities.



The directors of Honey Badger have over 12 years of experience in the field of community development and public health and are working hard to ensure Honey Badger is an integral part of the community and it's development.

THREE REASONS WHY TO CHOOSE US...

1. Community and Environmentally conscious
2. A complete holiday package (accommodation, safaris, mountain climbs and local activities)
3. A real taste of African hospitality with friendly staff, great food and excellent service.

Our Brochure Contents

In this document we highlight some key aspects of our business and life here at Honey Badger. We have included the following:

- Page 4: Our facilities
- Page 5: Ethical Mountain climbing
- Page 7: The Milestone Safari experience
- Page 9: Our local and cultural tours and activities
- Page 11: Our large group packages
- Page 13: Our giving back initiatives

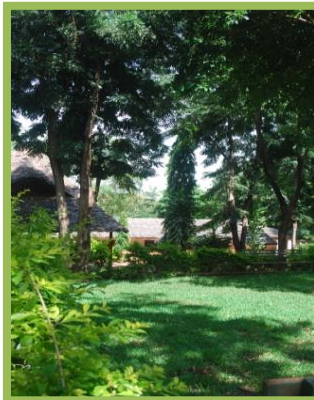
We welcome you to take time to read through our brochure and look at our pictures. You can visit our website or contact us for more information and for our rates.

A word from the Directors

“Our aim is to create an environment that not only showcases our wonderful country, but provides you, our guests, a lens through which you can understand our culture. Tanzania has so much to offer; her people, her natural beauty and her climate are hard to match anywhere in the world. However we want to be more than just a lodge and tour company. We are dedicated to community development and public health; we are passionate about the real life issues that affect our countrymen and women. We are working hard to make sure our lodge and our tour company are a mode through which we can help others, help those whose needs are greatest and ultimately help Tanzania to achieve everything she possibly can. We are committed to the welfare of our staff and our local community and are very grateful to all those who come to support our work. We warmly welcome you all to Honey Badger – Karibuni Sana.”

Joseph and Jenny Renju, 2015

Our facilities



- ✓ 14 en-suite rooms suitable for individuals, couples, triples, friends and families.
- ✓ A swimming pool, sunbathing areas and a children's soft play area.
- ✓ Two lounge areas and two meeting areas
- ✓ Free wireless internet access around the bar and restaurant area
- ✓ We have a fully licensed restaurant and bar areas for eating, drinking and generally enjoying. Our guests enjoy a fusion of African and world cuisine in our communal dining area as a family; giving people an opportunity to share experiences as would be expected in any Tanzanian home.

Please contact us for our rates and availability
info@honeybadgerlodge.com

Ethically Driven Mountain Climbing

Whether it's the mighty Kilimanjaro, the magnificent Meru or the less well travelled Ol Doinyo Lengai, whether you are an individual, a group or a tour operator, we can arrange your climb for you. Climbing is challenging physically, mentally and emotionally. For many it is a once in a lifetime opportunity and we know how important it is to get it right. We tailor make our climbing packages to suit. When people choose to climb with us they are not just getting a tour company, they are getting a concerned friend who wants to be sure everything goes well! For guests who wish to, we have regular email contact before arrival into Tanzania. We welcome all questions; nothing is too trivial, as we know that all individuals have different trip planning needs! On arrival we can arrange airport transfers and bring guests to our lodge, their new Tanzanian home. All climbers receive a full briefing before they begin their treks and get time to meet our guides and ask them any questions. We check all equipment to ensure it is suitable and make any last minute changes should they be needed. While on the mountains we are in daily or twice daily contact with our clients and guides to hear how the trip is going. We eagerly await their return and enjoy a post trip de-brief with a cold drink and a hearty meal. We feel triumph with every climber!



When you, your friends or your guests climb with us you can be confident that, unlike many mountain climbing companies, all the team members are well cared for and remunerated for the trip. Unfortunately on the mountain the competition is very tight and companies are undercutting each other. It is not the companies that feel these cuts, the porters are the ones often badly exploited. As part of our mission to be a community conscious travel option we are driven by our ethics.

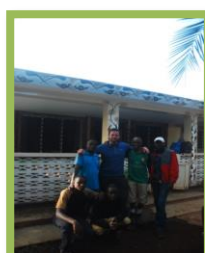
All our guides are experienced and have climbed with people of all different fitness and skill levels. They take great care of every client and monitor their health and well being each day. Our cooks are also experienced mountain cooks and whisk up hearty meals every day. No-one goes hungry on the mountain. We can cater to different eating requirements, just let us know beforehand.

THREE REASONS WHY TO CHOOSE US:

1. We operate ethically sound climbs and genuinely take care of the welfare of our climbing teams.
2. We are THE complete package; from airport to lodge to climb to lodge to safari to beach (if you choose), you need not look anywhere else!
3. When you climb with us you help us to support our local community initiatives.

PLEASE SEE OUR WEBSITE FOR MORE INFORMATION AND CONTACT US FOR OUR RATES

www.milestonesafaris.com or info@milestonesafaris.com



| Details | |
|---|--|
| Kili - Marangu | Known by many as the “Coca-cola route”, Marangu is by far the most popular route. This is the shortest route and you stay in huts rather than camping. It can be climbed in just 5 days, however this is not always best as allows less time for acclimatisation. |
| Kili - Machame | Many say this is the most beautiful route; your efforts will be rewarded with a unique scenic splendour that is not seen on the other commonly traversed routes. This route is often referred to as the “Whiskey route” is better suited to the slightly more adventurous hiker. This can be climbed in 6 or 7 days. |
| Kili - Lemosho | This is one of the least well known yet stunning route. The start is west of the other gates, and passes through the Lemosho Glades where you may view some large game animals. This is longer route and needs at least 8 days. |
| Kili - Rongai | The Rongai route is the least well travelled route on the mountain. It is on the northern side and whilst it is a long drive to starting point you are rewarded by fantastic views and the likelihood that you will be the only climbers around. This can be climbed in 6 days. |
| Please contact us for full details/itineraries for any routes as well as for other mountains in the area | |

Our prices vary according to the number of people in a group and the number of days taken to climb. Those interested in climbing with us should contact us directly with their specific requests; we can then provide you with a quote.

| Our prices include | But exclude |
|-------------------------------------|---|
| ✓ Full briefing before you trip | × International flights |
| ✓ Park fees | × Visas |
| ✓ Camping fees | × Travel insurance |
| ✓ Rescue fees | × Alcoholic and Non-alcoholic beverages |
| ✓ Food (3 meals per day) | × Additional personal equipment |
| ✓ Water | × Gratuities |
| ✓ Salaries (guide, cooks, porters) | |
| ✓ Guest and crew transport | |
| ✓ Crew park fees | |
| ✓ Administration fee | |
| ✓ Pre and post accommodation at HBL | |
| ✓ Certificates of achievement | |

For more information on our Kili climbs including our lodge, our pre-departure, pre-climb, climb and post climb support, tipping, equipment lists, our community conscious policies and practices and any additional extras that may interest you please see our website or contact us for details.

www.milestonesafaris.com

info@milestonesafaris.com



The Milestone Safari experience

Ever fancied visiting the highly acclaimed UNESCO world heritage site and one of the recently awarded 7 nature wonders of the world, namely the Ngorongoro Crater, or following the migration through the Serengeti, winding through the forests in Lake Manyara or counting the abundance of elephants in Tarangire or getting further off the well trodden safari paths? Whether you are an individual, a group or a tour operator, we can arrange your safari for you. For many a Tanzanian safari is a once in a lifetime opportunity and we know how important it is to get it right. We tailor make our safari packaged to suit. When people choose to go on safari with us they are not just getting a tour company, they are getting a concerned friend who wants to be sure everything goes well! For guests who wish to, we have regular email contact before arrival into Tanzania. We welcome all questions; nothing is too trivial, as we know that all individuals have different trip planning needs! On arrival we can arrange airport transfers and bring guests to our lodge, their new Tanzanian home. All guests receive a full briefing before they begin their safari and get time to meet our guides and see their vehicle. While on safari we are in daily contact with our clients and guides to hear how the trip is going. We await their return and enjoy a post trip de-brief with a cold drink and a hearty meal.

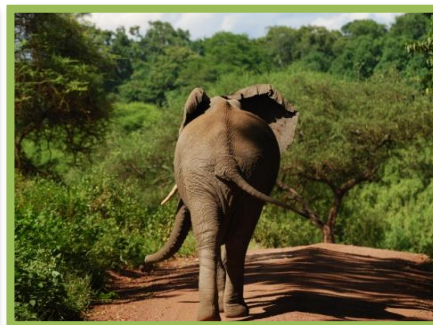


We offer different accommodation packages to suit all guest requirements, whether you are camping or staying in lodges we can organise it all. Our camping safaris are inclusive of all camping equipment and an experienced bush cook, who whisks up hearty meals every day. No-one goes hungry. We can cater to different eating requirements, just let us know beforehand. The lodges are all set in spectacular scenery and guests get to enjoy luxury whilst viewing amazing sites.

THREE REASONS WHY TO CHOOSE US:

1. We are THE complete package; from airport to lodge to safari to lodge to mountain climb to beach (if you choose), you need not look anywhere else!
2. When you go on safari with us you help us to support our local community initiatives.
3. A real taste of African hospitality with friendly staff, great food and excellent service

PLEASE SEE OUR WEBSITE FOR MORE INFORMATION AND DO NOT HESITATE TO CONTACT US FOR MORE INFORMATION. WE ARE HERE TO HELP YOU DECIDE ON THE BEST TRIP FOR YOU!



Example safari itineraries

'Short but as sweet as honey' - 2 days, 1 night - either Lake Manyara or Tarangire and a visit to the Ngorongoro crater

'More than a weekend away' - 3 days, 2 nights - Lake Manyara, Tarangire and Ngorongoro crater or Lake Manyara or Tarangire and Serengeti and Ngorongoro crater.

'Badger's great break away' - 4 days, 3 nights - Lake Manyara or Tarangire, 2 nights in the Serengeti, a visit to the Olduvai gorge and Ngorongoro crater.

'The Big Badger' - 5 days, 4 nights - Lake Manyara, Tarangire, 2 nights in the Serengeti, a visit to Olduvai gorge and Ngorongoro crater Or you could exchange either Lake Manyara or Tarangire for a trip to Lake Natron.

'Honey Badger's special big game viewing' - 6 days, 5 nights - Lake Natron, Lake Manyara, Tarangire, 2 nights in the Serengeti, Ngorongoro crater and a visit to Olduvai gorge.

'A steady trip with the Badger' - 7 days, 6 nights - Tarangire for 2 nights, Lake Manyara, 3 nights in the Serengeti and Ngorongoro crater with a visit to Olduvai gorge.

Example of additional activities

Walking/hiking, Hot air ballooning, Horse riding, Visit to a Maasai Boma, A day trip to Arusha National park, Fishing

Prices

Our prices vary according to the number of people in a group and the number of days, accommodation options and parks visited. Contact us directly with your specific requests for a quote.

Our prices include the following:

- ✓ Full briefing before you trip
- ✓ Park fees
- ✓ Accommodation
- ✓ Food (3 meals per day while on safari)
- ✓ Salaries (driver, cooks)
- ✓ 4x4 safari vehicle
- ✓ Driver park fees
- ✓ Administration fee
- ✓ Complimentary accommodation at HBL for > 4 days trips.

But excludes:

- × International flights
- × Visas
- × Travel insurance
- × Alcoholic and Non-alcoholic beverages
- × Additional personal equipment
- × Gratuities

For more information on our safaris including our lodge, our pre-departure, pre-safari, safari and post safari support, tipping, equipment lists, our community conscious policies and practices and any additional extras that may interest you please see our website or contact us for details

Why not take on the Honey Badger Challenge?

While on safari with us, if you spot and take a verified photo of our namesake; the Honey Badger, you will receive \$100 (you have to leave us with a signed picture as well)!



Our local and cultural activities

Honey Badger is one of the few cultural centres in the Kilimanjaro region. We offer a wide range of cultural and local activities that enable interested guests to leave the well beaten tracks and learn more about the local area along with its' cultures and traditions.

Traditional drumming and dancing



performance:

a local group will entertain you with the local drumming, known as Ngoma, and for those keen to have a go; they will welcome you onto the stage to join their group. We will explain to you the significance of the songs and dances enlightening you more on the many African cultures and traditions.



An African banquet: we will serve dinner of more fifteen assorted Tanzanian dishes, which you can wash down with some local brew. An ideal accompaniment to the traditional drumming and dancing. An experience you cannot miss!



Village or Moshi forest walks:

Honey Badger is based in a rural community and offers guests the opportunity to walk in and around the local villages, visiting schools, churches, homes and the nearby forest. You will also have the opportunity to visit and participate in talks at the Second Chance Education Centre. The forest walk takes you through the village and into the lush forest. Here, you will see a wide diversity of the local flora and fauna including the largest and oldest 'kivuli' tree in the area. You will also see an example of the rice paddy that Honey Badger purchased to provide food and a source of income to our local school

Water fall trip: The waterfalls provide a relaxing day trip, that enable you to see more of the countryside whilst also stretching your legs, and you can also swim. For those that are interested you can also pass by and visit the local caves, the Chagga museum and meet a local blacksmith.



Local coffee growers tour: Coffee was one of Tanzania's major exports, whilst this has lessened, coffee growing is still widespread across the region. This trip will provide you with the opportunity to meet with local coffee growers, learn about the history whilst experiencing the process involved in making your own cup of coffee, i.e. the picking, roasting and grinding of the beans.

Hair braiding: During your visit you will see the various different styles Tanzanian women model; you yourself can also experience this. We can arrange for experts to come and plait/braid your hair whilst you sit and relax in our outdoor lounge.



Lessons in traditional drumming and dancing:

our local groups are happy to teach some of the secrets involved in traditional dancing and drumming, helping you all to become experts.



Honey Badger cooking lessons:

Learn to cook a variety of Tanzanian dishes including green bananas, Ugali, Wali wa nazi, Chachandu and Dikodiko. It is a wonderful feeling to be able to enjoy the meal that you have cooked in a foreign Land and share it with your friends.



Town trips: We can arrange for guided town visits. During the trip you can visit markets, churches, shops and other points of interest. After traipsing around town you will have worked up a hunger, the day will finish with a late lunch at a tasty spot in town.

Visit our local community projects and spend time with our students.

Honey Badger is proud to support various community projects. We very much welcome you to visit these projects and spend time getting to know local people. Many of our guests have enjoyed making beads with our local groups, learnt how to make tie and dye with our students, played with the kindergarten children and taken on the local teams in frisbee and football. ***We do not charge for this activity but very much welcome and are grateful for your kind donations and continued support to these activities.***

Why not make a weekend of it?

You could join a few activities together, Contact us for more information on which activities can be joined together and the costs.



**PLEASE SEE OUR WEBSITE OR CONTACT US FOR MORE INFORMATION
WE ARE HERE TO HELP YOU DECIDE ON THE BEST TRIP FOR YOU!**

www.honeybadgerlodge.com



Do you have a large group of 6-28 people?

Honey Badger has over a decade of experience of hosting large groups. We have 4 large rooms which can sleep between 6-10 people as dorm rooms or you could opt for the other en-suite rooms in the lodge. Each of the dorm rooms has bathroom access (three are en-suite, one shares a bathroom with one of the en suite rooms – it has external connecting doors). The layout of the house means that if needed men/boys and ladies/girls can be separated on request.

Our budget en-suite rooms are ideal for any accompanying chaperones (in the case of school groups). The dorm rooms are only available for group bookings for between 6-28 people. When booked we provide meeting areas free of charge. During the high season we open up our second restaurant specifically to cater to these groups.

Our swimming pool and lush, spacious grounds provide groups with a lovely natural relaxing environment and ample space for groups to work, study or just meet. Our location enables groups to experience rural

life and feel more in touch with the country they are visiting.

The directors of Honey Badger have over 12 years of experience in the field of community development and public health and are working hard to ensure Honey Badger is an integral part of the community and it's development. When you support honey badger you are helping us to support our local community. See our website or ask us for more details on our giving back initiatives.

THREE REASONS WHY TO CHOOSE US...

1. **Community and Environmentally conscious**
2. **A complete holiday package (accommodation, safaris, mountain climbs and cultural and local activities)**
3. **A real taste of African hospitality with friendly staff, great food and excellent service.**





Please contact us for our rates and offers for any of the packages that you have read about in our brochure.

Our special group package

Groups have their own cooks and serving team and a whole restaurant where all meals will be served¹. The package includes a cooked breakfast, 10am tea and snacks, a cooked two course lunch, afternoon tea and a cooked two course dinner. Our meals give groups a chance to sample different Swahili classic dishes. Our serving team explain each meal, where it's from and when it's eaten so that even your everyday meal is a cultural learning experience. The groups can purchase their own drinks from the bar however some groups also opt to provide water (using our chilled water dispenser) for the group.

We are more than just an accommodation option, we can help arrange you whole group package. Please contact us if you want more information on the following:

- Safaris and Kilimanjaro climbs (when we organise these activities you will receive 10% discount on your group's accommodation)
- Traditional African drumming and dancing nights
- Day excursions including to the local waterfalls, caves and the local Chagga museum and to the first hut on Kilimanjaro
- Visits to local projects e.g. schools, kindergartens, health facilities, community groups
- Playing sports and games with local groups
- Getting involved in local craft making
- Traditional cooking and/or drumming lessons and much more...

Please contact us for more information on any of these activities and any specific requirements for your group



¹ This is organised according to bookings, e.g. during the high season and when the rooms are full. Groups will always receive more than sufficient attention.

Our 'Giving Back' initiatives

Honey Badger is situated in a rural community, where many of the community members are poor, living in basic housing (no electricity, or water) often on less than a dollar a day. The Renju Family believe it is important to 'give back', by this we mean providing opportunities for the development of our surrounding community. Part of the proceeds from the accommodation, tours and safaris go toward the development of community initiatives. Last year we are proud to highlight just a few of the things we achieved...



- ✓ Built two fuel efficient stoves and trained others how to build stoves and they have now built more in the community
- ✓ Conducted local and community first aid and health education courses
- ✓ Planted over 100 trees in the community and developed a tree nursery
- ✓ Reviewed and improved the teaching in the local kindergarten
- ✓ Supported the teachers in the secondary school (passing on key teaching skills)
- ✓ Training in bead making, tie and dye and other craft items and setup a local craft shop stocked with items from and for the school,
- ✓ Built a wall around a girls dormitory and foundations for a new a new chicken house
- ✓ Supported the school to plant a vegetable patch and buy the produce at the lodge
- ✓ Supported teacher training programmes
- ✓ We still have the rice paddy that we purchased for the local school in 2010. And this continues to provide not only food for them but also enough rice to sell to provide some additional income for the school.
- ✓ By partnering with African Impact we support a Masaai Literacy Education Programme

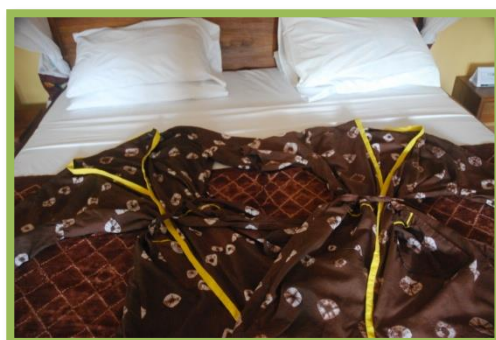


Our 'giving back' approach is multi-faceted.

In order to support our community we have various different activities constantly on going. We have included a few highlights here. We would also like to take this opportunity to thank all our guests for enabling us to continue our support to our local community. Please contact us for more information on these or any other aspects of our work.

Supporting Local Community Groups:

We endeavour to purchase community produced goods, building capacity where necessary. Such an initiative encourages financial independence thereby improving the communities' ability to support itself. For example we purchase all our fresh produce from local producers, we have various tie-dye materials/products in our rooms and around the lodge which were produced by local women/girls. The paintings in our rooms were commissioned to a local artist. We buy these materials from the local groups for the lodge, but also act as an outlet to market their goods.



On-the-job training:

One of our goals is to be a centre for community development; we offer training opportunities to hospitality/tourism students and have a special Honey Badger training scheme. It is made up of 16 training modules, for each department there are some compulsory training modules and the other ones they can select if they wish. 14 of the modules currently relate specifically to the work at Honey Badger and the remaining two focus on the personal development of the staff (health, HIV and first aid and livelihood training). We welcome various guest trainers for the programme, so if you feel you have a skill and want to share it with our team then please let us know when you are booking.



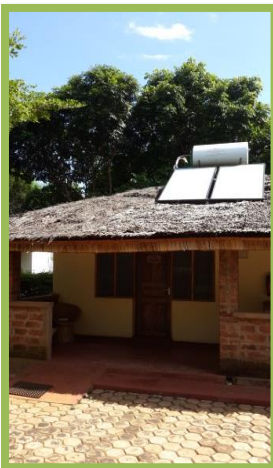
“Creating Chances through Education”

Honey Badger is proud to support our local Education Centre. Our history with the centre goes back a long way. In fact it was the Lodge that actually raised the funds to start the centre. The Education Centre was founded to give children educational opportunities. The centre currently supports first chance education centre is a pre school for 3-5 year olds. The centre offers better opportunities prior to starting school and continued support with tutoring and mentoring through to the secondary level. We support the centre through financial donations, strategic planning, administration, 100% of income from our gift shop and with the produce from our rice paddy.



Environmentally conscious

Throughout this challenging power-starved time in Tanzania, we have not resorted to using a fuel guzzling, noisy and polluting generator, opting, instead to increase our investment in Solar power supplies. We also store rain water and use it around the lodge to keep our gardens green. Our gardens and specifically our trees are used to show case the importance of caring for ones environment and we continue to work with the local community to plant and look after trees.





**PLEASE SEE OUR WEBSITE OR CONTACT US
FOR MORE DETAILS**

www.honeybadgerlodge.com
info@honeybadgerlodge.com

**WE ARE COMMITTED TO REMAIN
“YOUR COMMUNITY CONSCIOUS TOURISM
OPTION”**